

MegaVision Digital Camera Back



CAMBO



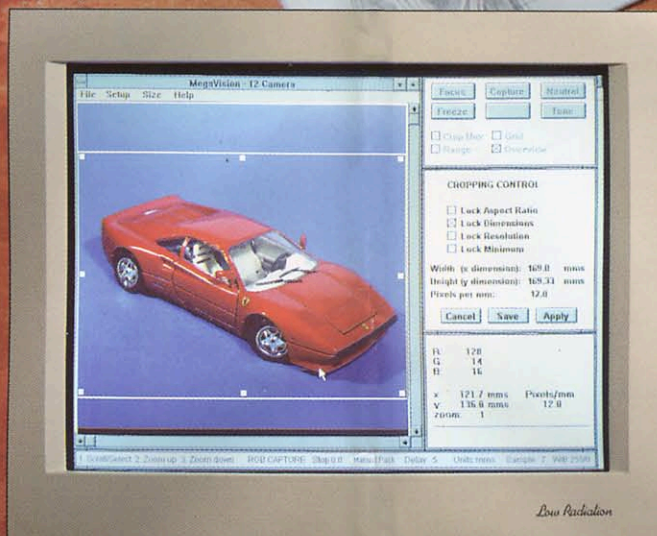
The T2 Camera Back is attached to the rear frame of the large format camera, and allows for full camera adjustments such as tilts, swings and shifts of both front and rear standards. All movements for perspective control and depth of field adjustments (Scheimpflug) remain accessible. The digital back's relatively light weight and compact design keeps the center of gravity within the view camera's dimensions.



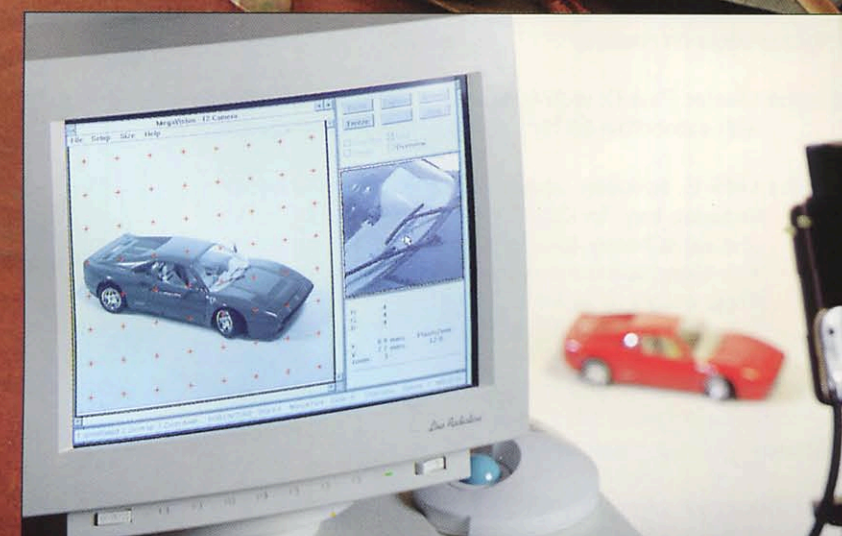
The built-in shutter and colorwheel create an extended freedom of lens choice. Choose from a wide range of digital lenses with aperture setting only, or from medium format bayonet-mount lenses for Hasselblad, Mamiya RB or Pentax 67. Adapting lensboards are available.



The Cambo MegaVision Image Station is a self-supporting image-capturing system that consists of the following equipment: A Cambo UBS-E Heavy Duty Studio Stand, a Cambo Master Plus 4x5 View Camera, a T2 Digital Camera Back, and a computer with the image-capturing software. This unique package is a self-contained, ready-to-use imaging system for studios and photographers that need a comprehensive, integrated system that makes direct digital images available in seconds for further processing, either to be exported through a network or transported by removable harddisks.



The computer's software allows you to set up a cropping box to compose the image within the desired dimensions. An optional grid like that on a camera's ground glass, can be applied over the live image as a compositional aid and to facilitate perspective controls.



Focusing is as easy as possible with the built-in live-focusing mode, which allows you to control sharpness upto the pixel on the monitor of the capture computer. The digital back may be taken off of the camera for extra critical focusing with a magnifier loupe, as the CCD-element is exactly in the focal plane. For shooting back-up images on transparency or negative film, simply exchange the digital back with a traditional film back.

The Cambo Megavision Digital Camera is a workstation designed for the professional studio photographer. It consists of the T2 Digital Back, a Cambo 4x5 View Camera and a dedicated image-capturing computer. Together with the photographer's own lighting and optics the system is complete. The system can be expanded with Cambo's dedicated UBS-E Studio Stand with fully ball-bearing supported individual movements for lateral, vertical and circular adjustments.

This rock-solid stand combined with our super versatile view camera, the flashing T2 digital back and extremely responsive computer not only creates excellent digital photography but represents an exceptional value for today's studio photographer and a very wise investment in their future.

Technical Information:

Size (hxbxd)	:	200x165x60 mm
Weight (Kgs)	:	1700 gr.
Image Area	:	31 x 31 mm
CCD-element	:	2048x2048 area array
Image Size	:	12 Mb per color image
Bits per Color	:	12 Bits capture per color
Sensitivity	:	300 ASA in black/white 25 ASA in color mode
Illumination	:	Synchronized flash
Flash	:	Synchronized from control unit
Shutter	:	Integrated in digital back
Color Filters	:	Integrated in digital back
Connections	:	1 cable from back to control unit 1 flash sync on control unit 1 power cord to control unit 1 cable from control unit to computer
Advised Lenses	:	Digital lenses, ranging from 60 mm upto 150 mm with electronically controlled aperture
Optional Lenses	:	Bayonet-mounted lenses from Hasselblad, Mamyia RB or Pentax 6x7 using special adapting lensboards
Available Models	:	T2-CC for Cambo 4x5" cameras T2-CS for Sinar 4x5" cameras T2-CL for Linhof 4x5" cameras Other models on request
View Camera	:	Cambo Master Plus-D, with coarse/fine focusing, all geared movements, yaw-free basetilt, with extendible 25 cm monorail and wide angle bellows.
Studio Stand	:	Cambo UBS-E, specially dedicated for electronic imaging Includes tray for Capture Computer with 14" monitor and extra heavy counterweight for optimum balance. The stand is mounted on an extra heavy and wide UHD base. Total weight of stand 155 Kgs Total height of stand 319 cm.
Computer	:	Intel® Processor with 32 Mb RAM, 500 Mb Harddisk, 24-bits Graphic Adapter, SCSI Adapter, 88 Mb Syquest Drive, 14" SVGA Monitor. Optionals: 1.0 Gb Harddisk, 15" or 17" Monitor
Accessories	:	Stand-Alone Adapter with 3/8" tripod mount and Nikon Bayonet mount for Nikon 35 mm lenses for use of the T2 Back as a 35 mm camera.

*Technical specifications can be changed without notice.
Technische Änderungen sind vorbehalten.*

*Alle wijzigingen voorbehouden.
Caractéristiques sont susceptibles d'être modifiées sans préavis.*

CAMBO FOTOGRAFISCHE INDUSTRIE BV
P.O. Box 200, NL-8260 AE Kampen/Holland
Telephone (31)05202-14644 / 038-3314644
Telefax (31)05202-15110 / 038-3315110
(after Sept.1995)